



extreme kids  
& crew



A SPACE TO BE

2015  
annual report



## Squid

**If you were a squid,  
We could get rid of the baby clothes  
And wooden blocks.  
We'd put you in a sea chest  
Glassy, sadly square, but filled with the best in pebbles  
and shells.**

**We'd watch, noses smushed,  
Landlubbing bugs with big eyes and tentacled fingers,  
Asking each other: do you think it's happy?  
What would it like to eat?**

**It wouldn't be that bad,  
Except for the neighbors,  
The snuffling relatives,  
The asinine commentary.  
And what, pray tell, is wrong with a squid?  
My spittle spotting the sidewalk.  
Passersby would shudder or smugly pity.  
But when they were gone,  
We'd have fun, swirling the water and wondering.**

**Eliza Factor**



Felix Factor was born with multiple disabilities, including autism and cerebral palsy. His mother is Eliza Factor, the founder of Extreme Kids & Crew. Felix and his neurotypical sisters inspired Eliza to make Extreme Kids & Crew a space to be for the whole family.



## Extreme Kids & Crew turned four years old in 2015.

Each year has brought new families, new programs, and new insights, making for steady growth that reflects the need for creative, affordable spaces to accommodate New York City's children with disabilities.

As anyone with a disability—or anyone close to a person with a disability—knows, the public arena can often be inaccessible, condescending, or unkind. At Extreme Kids, we wanted to create an alternative universe that was easy, fun, open, and creative—a place where everyone had air to breathe and a space to be free, whether or not they had money, arms, legs, speech, sight, conventional manners, and so on.

We started in 2011 with a small space within the Coop School in Bedford Stuyvesant, Brooklyn. The experiment worked. Families came from all over the city, bringing children with a variety of disabilities. Parents, children, friends and relatives played, made art, danced, told stories, shared resources, cried, hugged—and kept coming back. Word spread, and by 2013, both the Coop School and Extreme Kids needed room to expand.

Our next host was—and still is— P.S. 15, a Title I elementary school in Red Hook, Brooklyn. At P.S. 15, our sensory playspace is used by school teachers, service providers, and students during school days, and by Extreme Kids' members when school's out. This wonderful space-sharing experiment showed us we could reach more families simply by aiding public schools in low-resourced areas. By opening our

playspace to P.S. 15 during school hours, we give the teachers and service providers a valuable resource—and something their students love! We also provide free after-school programs for these students. On the weekends, we continue what we've been doing from the start: welcoming families of children with disabilities from all over the city, bringing people from diverse backgrounds and disabilities together through open-ended movement, play, arts workshops, events, and more.

The continued success of the P.S. 15 Red Hook Space led, in 2016, to the opening of a new space in another Title I school: P.S. 71 in Ridgewood, Queens. It has been a joy getting to know the parents, administrators, teachers, therapists, and particularly the students at our new facility. We look forward to expanding our Queens programming in the fall, and exploring further expansions in collaboration with the NYC Department of Education.

It's been a great year, and we couldn't have done it without the help of our donors, advisors, partners, staff and board. Thank you so much for participating, and for making New York City a more equitable, creative, and celebratory place for children with disabilities.

Sincerely,

*Eliza Factor, Founder and Board Chair*

*Caitlin Cassaro, Executive Director*



**I feel like it's priceless to have this community [at Extreme Kids & Crew], and the friendships. It's open to all disabilities and that's strangely rare. The fact that everyone can attend is impactful.**

**Jen Sellar, Parent Member and Board Member**





**From infancy, play is essential to the social, emotional, cognitive, and physical well-being of children. Children who live in poverty, however, often face socio-economic obstacles that cut into playtime, which in turn affects their mental health and social-emotional development. For under-resourced children to reach their highest potential, it is essential that parents, educators, and pediatricians recognize the importance and lifelong benefits that children gain from play.**

**American Academy of Pediatrics, 2012**



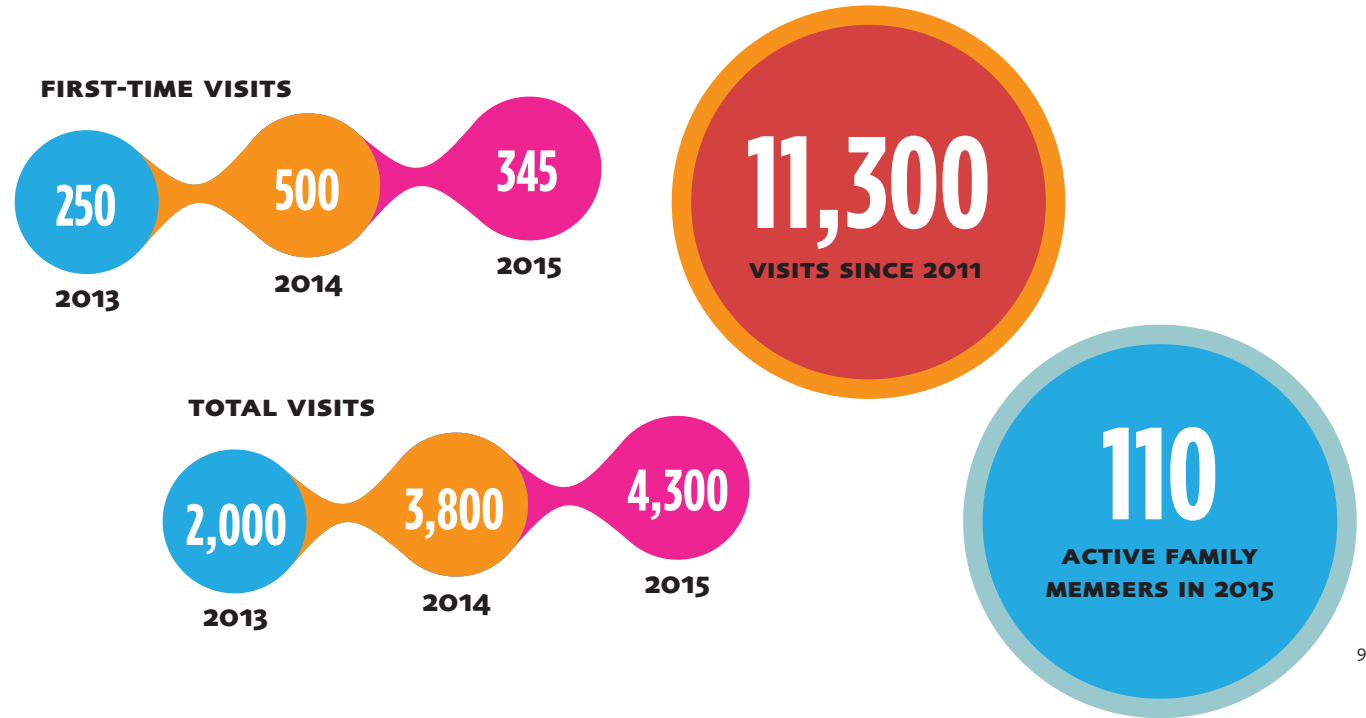
**More than 75% of families report they can't find after-school care, non-institutional community services, trained and reliable homecare providers, summer care, or residential, respite and other services**

**60,889—number of persons under age 18 with at least one disability in NYC**

**38.1%—poverty rate for persons under age 18 with a disability in NYC**

**\$14,880—mean household income for persons under age 18 with a disability in NYC**

NYC People with Disabilities Statistics, updated 2016







**Since we opened our doors in 2011**, it has been our mission to provide a welcoming space where the families of children with any sort of disability could connect, and where their children could feel comfortable being themselves. In 2014, in an effort to bring our disability community to more families, we began a "space-sharing experiment" with P.S. 15, a Title I school in the underserved Brooklyn neighborhood of Red Hook. It worked in more ways than one: The year we moved to P.S. 15, we saw our membership increase by 100%. Just as importantly, we helped our host school better serve its children with disabilities by providing a top-notch sensory gym, which is treasured by students, teachers, and therapists.

The success of our partnership with P.S. 15 led to our "ball pit in every borough" campaign in 2015. In collaboration with the NYC Department of Education we found our next location in Queens.

P.S. 71 is a Title I elementary school in Ridgewood, Queens, where 17% of students receive special education services (*School Quality Snapshot, 2014–2015*). At this new location, we emulated our space-sharing model, but tailored the space and programming to better serve the local community. Together with Principal Indiana Soto, the staff and service providers of P.S. 71, we will reach local families of children with disabilities, and provide disability-focused information and resources; parent support groups, and family-centered arts, movement and play programs.

**Through our collaboration with Extreme Kids & Crew, we are providing supports to families with children who have disabilities by using the arts, movement and play. The playspaces at schools in Brooklyn and Queens give families a place to meet, get to know one another and build a supportive community. We look forward to continuing to work together to support families with students who have disabilities.**

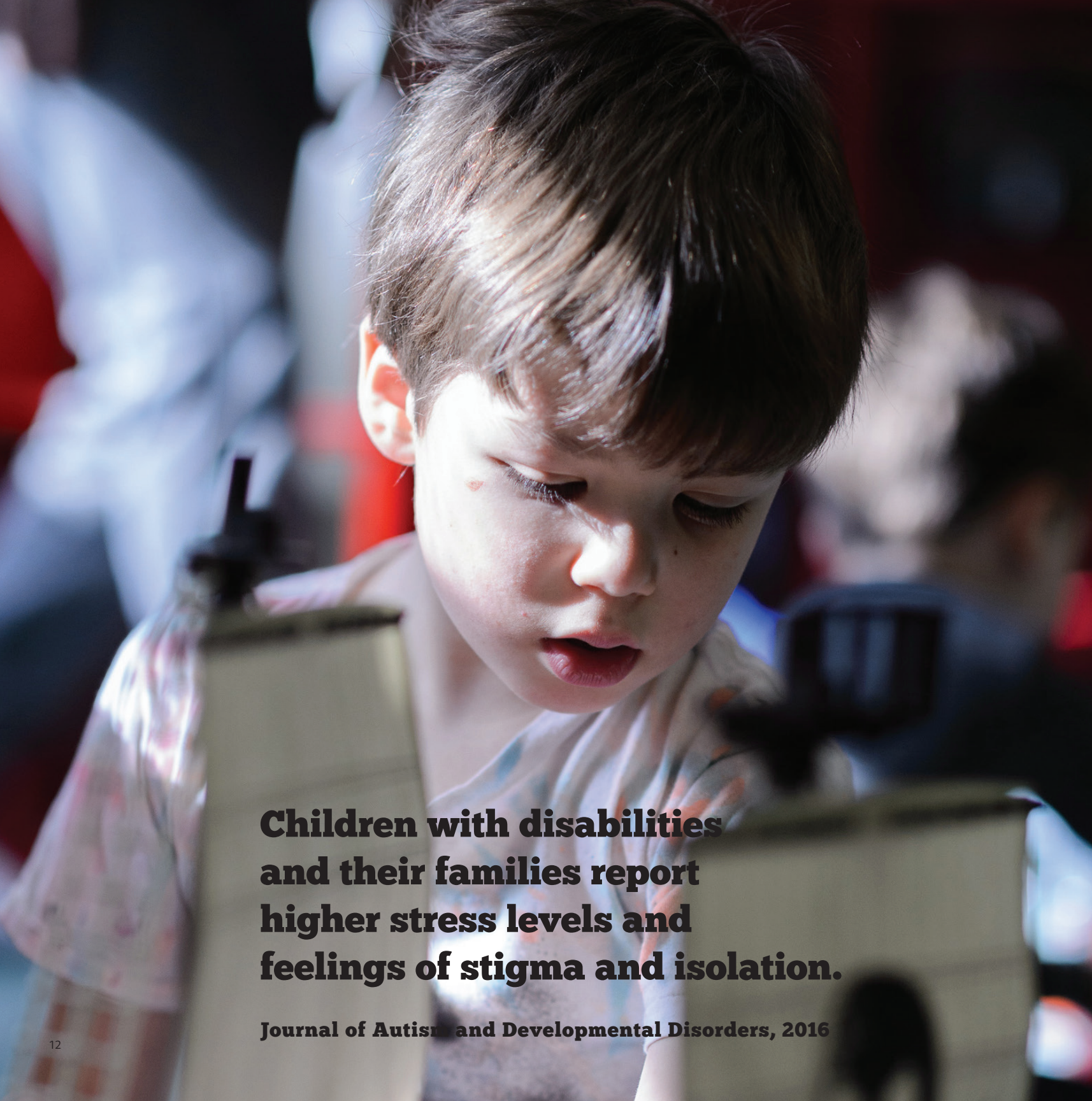
**Schools Chancellor of the NYC Department of Education, Carmen Fariña**

**This is the first time we've been able to have Kaden take part in an after-school or summer camp program. Now he's doing both! I'm so grateful that he's here and able to be a part of this. He has friends now, he's happy, and even his teachers have seen his self-confidence grow.**

**Kirsis Cuello, Parent Member**







**Children with disabilities and their families report higher stress levels and feelings of stigma and isolation.**

**Journal of Autism and Developmental Disorders, 2016**



**A vast majority of adults caring for children with disabilities suffer from physical fatigue (88%), emotional stress (81%) and emotional upset or guilt (81%) some or most of the time.**

**The Arc, 2011**

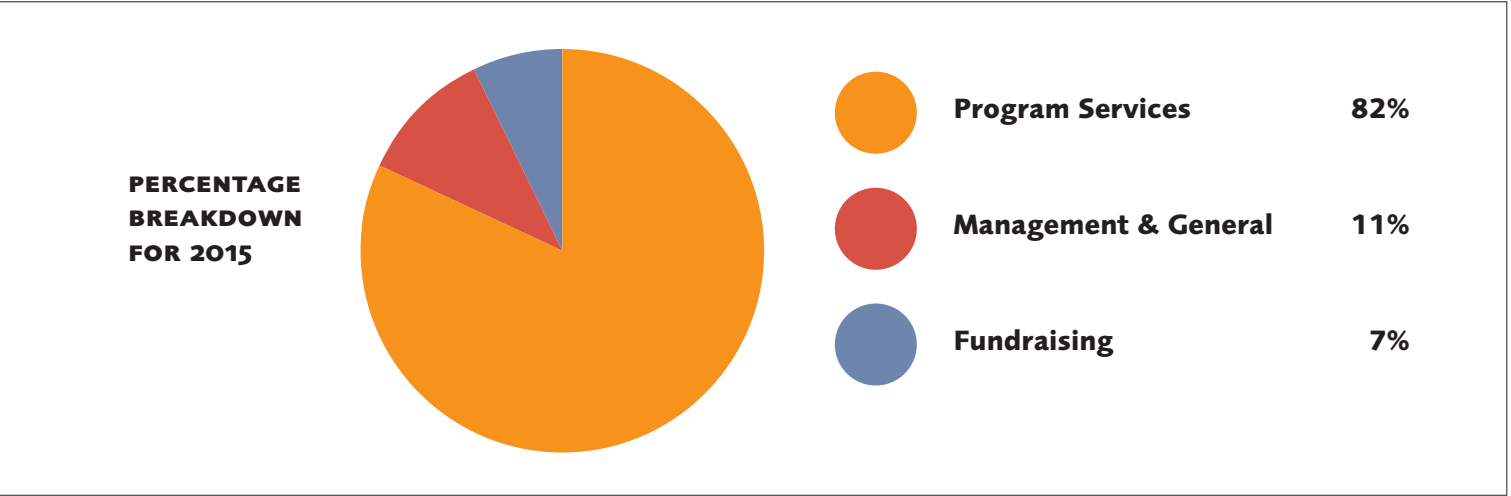






STATEMENT OF FINANCIAL ACTIVITIES			
	2013	2014	2015
<b>SUPPORT</b>			
Grants and Contributions	\$152,593	\$272,264	\$301,065
Program Income	12,580	12,633	15,602
In-Kind Services/Donated Goods	–	7,135	30,007
Special Event Income	2,229	5,370	20,154
Miscellaneous	545	–	–
Investment Income	17	11	29
<b>Total</b>	<b>\$167,964</b>	<b>\$297,413</b>	<b>\$366,857</b>
<b>EXPENSES</b>			
Program Expenses	\$159,919	\$223,674	\$248,714
Management and General	18,784	29,213	35,380
Fundraising Expenses	5,548	17,417	20,573
<b>Total</b>	<b>\$184,251</b>	<b>\$270,304</b>	<b>\$304,667</b>
<b>Change in Net Assets</b>	<b>-\$16,287</b>	<b>+\$27,109</b>	<b>+\$62,190</b>
<b>Net Assets Beginning of Year</b>	<b>\$27,400</b>	<b>\$11,113</b>	<b>\$38,231</b>
<b>Net Assets End of Year</b>	<b>\$11,113</b>	<b>\$38,231</b>	<b>\$100,421</b>

STATEMENT OF FINANCIAL POSITION			
	2013	2014	2015
<b>ASSETS</b>			
Cash and Cash Equivalents	\$52,561	\$38,586	\$79,341
Prepaid Expenses	2,660	1,691	6,794
Grants Receivable	–	–	9,661
Property and Equipment, Net	14,443	10,962	8,359
<b>Total Assets</b>	<b>\$69,664</b>	<b>\$51,239</b>	<b>\$104,155</b>
<b>LIABILITIES AND NET ASSETS</b>			
<b>LIABILITIES</b>			
Accounts Payable and Accrued Expenses	\$8,551	\$3,008	\$3,734
Loans from Related Parties	50,000	10,000	–
<b>NET ASSETS</b>			
Unrestricted Funds	11,113	38,231	90,722
Temporarily Restricted Funds	–	–	9,699
<b>Total Liabilities and Net Assets</b>	<b>\$69,664</b>	<b>\$51,239</b>	<b>\$104,155</b>





Board of Directors

Eliza Factor,  
    *Founder and President*  
Micaela Walker,  
    *Vice President*  
Patricia Wolff,  
    *Board Treasurer*  
Dina Rosenbloom,  
    *Secretary*  
Kamari Alexander  
Vanessa Connelly  
Jamie Luft  
Melissa Morgenlander  
Eric Nicklas  
Ghita Schwarz  
Jennifer Sellar  
Elizabeth Wollman

Staff

Caitlin Mia Cassaro,  
    *Executive Director*  
Diana Baron-Moore,  
    *Program Manager*  
Leigh Lumford,  
    *Communications Manager*  
Jolene Festa,  
    *Staff Teacher*  
Dana Behan and Cyn Morgan,  
    *Program Facilitators*  
Elias Eason and Justin Ortiz,  
    *Security*

Advisors

Amy Weber, LCSW  
Julie Cavanagh, BS Special Education,  
    MS Curriculum and Teaching  
Michelle Ballon, MSW, PhD

Grants

ALL IN BKLYN  
Butler Family Foundation  
City Council Member Carlos Menchaca  
Department of Youth and Community  
    Development  
Hyde and Watson Foundation  
Mary Duke Biddle Foundation  
Meringoff Family Foundation  
Magic Pebble Foundation  
Marymount School of New York  
The O'Connell Organization Family  
    Foundation  
William J. & Dorothy K. O'Neill  
    Foundation  
Ronald McDonald House Charities  
TerraCRG  
The Matthew R. Stone Trust  
The Joseph Leroy and Ann C.  
    Warner Fund

Partners, Teaching Artists, and  
Supporting Organizations

Alba Somoza  
Atlas Foundation for Autism  
Audra Rox and Jennifer Milich  
Brooklyn Academy of Music  
Brooklyn Children's Museum  
Brooklyn Public Library  
Cleaning with Meaning  
Dancewave  
Freddy's Bar  
GallopNYC  
Gary Shulman  
GiGi's Playhouse New York  
INCLUDEnyc  
Jalopy Theatre and School of Music  
Jessica Zippin, Dance/Movement  
    Therapist  
KEEN New York  
Kentler International Drawing Space

Mark Morris Dance Group  
Michael Bean  
MusicWorks  
New York Cares  
New York Transit Museum  
NYC Department of Education  
NYC Department of Parks and  
    Recreation  
Red Hook Boaters  
South Brooklyn Children's Garden  
Speak, Learn & Play

A Very Special Thank You To

501 Union  
Amelia Wilson  
Brooklyn Friends School  
Carmen Fariña, Chancellor of the NYC  
    Department of Education  
Cleary Gottlieb Steen & Hamilton LLP  
Dry Dock Wine & Spirits  
Indiana Soto and the P. S. 71 Family  
Jennifer Volpe  
Jim Cassaro  
Lawyers Alliance for New York  
Maysoon Zayid (2015 Felix Award  
    recipient in Performing Arts)  
Michael McWatters  
Movers, Not Shakers!  
Nina Collins  
NY Printing & Graphics  
Peggy Madison and the P.S. 15 Family  
The Fuqua Family  
Van Brunt Stillhouse  
Victor Calise, Commissioner of the  
    Mayor's Office for People with  
    Disabilties  
Zach Hochkeppel



Extreme Kids & Crew is a 501(c)(3) organization incorporated in 2010. We celebrate children with disabilities, promoting socialization and confidence-building through arts and play-based programming. Our organization believes in creating an inclusive community for the whole family to play, relax, laugh, cry and connect. There are many ways to make this community of disability thrive!

- Volunteer to be a "Play Partner" to the many children visiting our spaces
- Donate and financially support the programs the organization offers
- Join a committee and lend your specific talents
- Join the board and be a leader to this growing organization.

Photo of Felix on page 2 by Eliza Factor  
All other photos by Filip Wolak  
Design by Rob Kimmel / robkimmeldesign.com  
All photos taken at Extreme Kids & Crew locations and events.

Please contact us at  
info@extremekidsandcrew.org  
347 410 6050  
Visit us online at extremekidsandcrew.org.





## **Extreme Kids and Crew**

71 Sullivan Street  
Brooklyn, NY 11231

347 410 6050

[extremekidsandcrew.org](http://extremekidsandcrew.org)

-  [facebook.com/extremekidsandcrew](https://facebook.com/extremekidsandcrew)
-  [twitter.com/EDExtremeKids](https://twitter.com/EDExtremeKids)
-  [@extreme\\_kids\\_and\\_crew](https://instagram.com/extreme_kids_and_crew)