

extreme kids  
& crew



A SPACE TO BE



**2016**  
**annual report**



**We love Extreme Kids and its crew and the environment of tolerance and respect of our diversities, it's what keeps bringing us here every Saturday. Avril's extra friendly personality is cherished, understood and appreciated by our community, and we get the chance to share with other families the satisfactions and challenges of the beautiful path our children trace for us.**

**Carolina Amaya, Queens member since 2016**







I recently looked through our first annual report from 2012, looking for words to add to this annual report. I was feeling downtrodden, discouraged by governmental movements to repeal the Affordable Care Act and de-fund Title I, which provides financial assistance to schools that serve poverty-stricken neighborhoods. These programs are particularly helpful to people with disabilities, and their dismantling will cause much suffering. As I had hoped, those pictures of the early days of Extreme Kids & Crew, did inspire me, for I remembered the love and acceptance my family found here when we were going through an early time of confusion and struggle.

Extreme Kids & Crew provided and continues to provide something so simple but rarely available to families feeling isolated, under pressure, and in despair: a warm and welcoming environment that celebrates children with disabilities as they are. There is a quote from a mother in that first report that could have been written by me or many of the thousands of caregivers

that visited since: "The energy of acceptance in your space is like oxygen we didn't even know that we needed."

Now in our sixth year, we have grown immensely in space and programming, and that acceptance I felt when I first entered Space No. 1 remains an integral part of everything we do. In the coming years we are incredibly excited to begin in-school programming and expansion into the Bronx! And while we find immense joy in meeting new parents and young children every week, we remain committed to our first members, now growing into pre-teens, teens and young adults. In the years ahead, we will continue to create inclusive arts and play-based programming for the entire family while listening to and learning from the disability community to make sure we are allies in the collective mission of equal rights, understanding and acceptance.

Sincerely,  
Caitlin Cassaro, *Executive Director*

**Particularly striking, is the comparison of poverty rates. When looking at the difference in poverty rates between people with and without disabilities, the poverty gap is considerably wider in New York City than the rest of the state and in the United States.**

**Center for Independence of the Disabled, New York**

**60,889—number of persons under age 18  
with at least one disability in NYC**

**38.1%—poverty rate for persons under age 18  
with a disability in NYC**

**\$14,880—mean household income for persons  
under age 18 with a disability in NYC**

**NYC People with Disabilities Statistics, updated 2016**

**Extreme Kids & Crew** remains resolute in providing affordable programming for all, regardless of income or disability.





**Our commute from the Bronx ranges anywhere from one and a half to two hours, give or take the MTA's weekend schedule.**

**We keep coming back because we feel this space offers enough activities to help keep our son engaged for hours. The staff and volunteers just get our son, and his excitement while at the facility is a constant reminder that we are in the right place!**

**Carolyn Castro, Queens member since 2016**

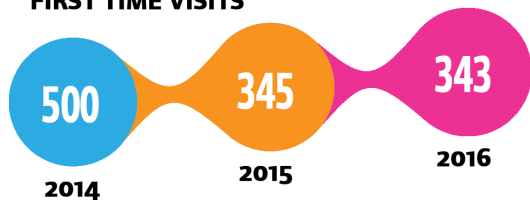








#### FIRST TIME VISITS



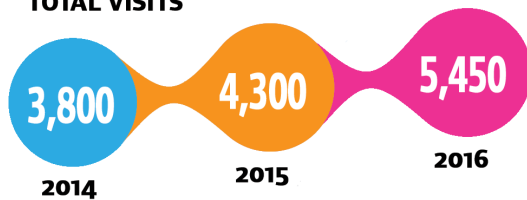
18,550

VISITS SINCE 2011

5,000

VISITS PER YEAR BY  
P.S. 15 AND P.S. 71  
STUDENTS DURING  
THE SCHOOL DAY

#### TOTAL VISITS



265

ACTIVE MEMBER  
FAMILIES IN 2016



A young boy with dark hair, wearing a blue and yellow striped long-sleeved shirt, is smiling and reaching up with his hands towards a large blue balloon. He is surrounded by a sea of colorful balls in shades of blue, orange, green, and pink. In the background, there is a blue safety net and a yellow light source.

**In 2016 there were...**

**127**

days of  
**CAMP AND  
AFTER-SCHOOL**

**155**

**OPEN PLAY  
sessions**

**162**

hours of  
**ARTS AND MOVEMENT  
classes and  
monthly events**







Extreme Kids & Crew provides the P.S. 15 community, and the broader community, with vital services for our children with disabilities. Their sensory gym is open to our therapists and students during the school day, providing them with essential space and equipment they wouldn't otherwise have access to.

Extreme Kids' free after-school program, which two of my students attend four days per week, is

**an innovative, magical place where children are accepted and honored for their differences and where they are empowered to develop their voice and agency.**

One student, who is on the spectrum, has brought his love of music from Extreme Kids' music program, and now takes on the role of class conductor and drummer whenever the need arises, including everyday during our end-of-day song. He leads, he laughs and makes others laugh, he is engaged and happy and he is connecting with his peers meaningfully and responsively. My other student, who has an intellectual disability, has struggled with expressive language and though she has a lot to say and is very social, she has largely spoken in single word statements. Since being a part of Extreme Kids programming, she speaks more in phrases and short sentences, and has developed more conversational and social language and that has extended into academics.

The Extreme Kids community is play and art-based and meets kids where they are and sees them for who they are. From Open Play, to structured programming, to parent workshops and support, the services they provide to families of children with disabilities are essential and unparalleled. In a world that often either ignores or tries to make typical children with disabilities,

**Extreme Kids forges another path; acceptance, celebration, and simply giving space to discover gifts, potential and joy. It is truly a space to be!**

*Julie Cavangh, P.S. 15 Assistant Principal and Extreme Kids & Crew Advisor*



**The world is screwed up in so many ways and when you come in here (Extreme Kids) you have a relationship, you're safe, you can talk about your issues and it's just... free.**

**Antwanette Garner, Brooklyn member since 2014**



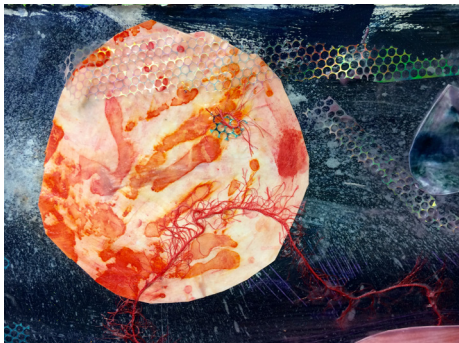
**More than 75% of families report they can't find after-school care, non-institutional community services, summer care and other services. The Arc, 2011**

**In collaboration with the Department of Education, we have been able to reach even more families and their children with Individualized Education Programs (I.E.P.) by expanding within Title I public schools in predominately-disenfranchised neighborhoods in New York City. The two schools we are currently operating in are P.S. 15 in Red Hook, Brooklyn and P.S. 71 in Ridgewood, Queens. We build sensory play-spaces in each location that the school's therapists use during the school day and Extreme Kids & Crew uses after school and on the weekends. Next stop, the Bronx!**



STATEMENT OF FINANCIAL ACTIVITIES

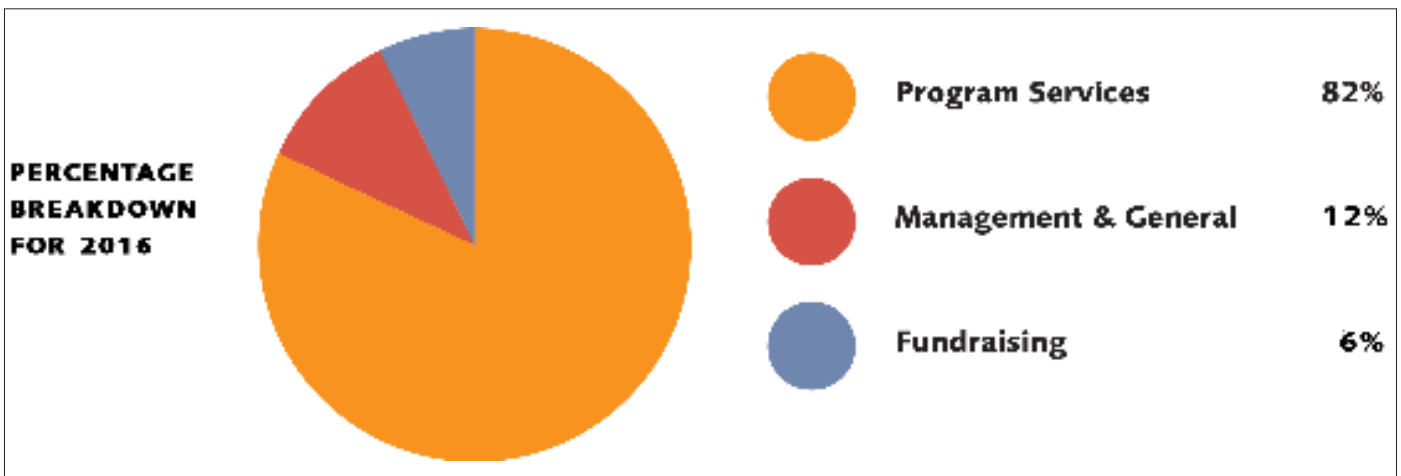
	2014	2015	2016
SUPPORT			
Grants and Contributions	\$272,264	\$301,065	\$371,710
Program Income	12,633	15,602	29,720
In-Kind Services/Donated Goods	7,135	30,007	9,779
Special Event Income	5,370	20,154	10,552
Miscellaneous	–	–	–
Investment Income	11	29	29
Total	\$297,413	\$366,857	\$421,790
EXPENSES			
Program Expenses	\$223,674	\$248,714	\$338,276
Management and General	29,213	35,380	47,233
Fundraising Expenses	17,417	20,573	24,796
Total	\$270,304	\$304,667	\$410,305
Change in Net Assets	+\$27,109	+\$62,190	+\$11,485
Net Assets Beginning of Year	\$11,113	\$38,231	\$100,421
Net Assets End of Year	\$38,231	\$100,421	\$111,906





# STATEMENT OF FINANCIAL POSITION

	2014	2015	2016
ASSETS			
Cash and Cash Equivalents	\$38,586	\$79,341	\$105,712
Prepaid Expenses	1,691	6,794	6,937
Grants Receivable	–	9,661	1,295
Property and Equipment, Net	10,962	8,359	19,009
<b>Total Assets</b>	<b>\$51,239</b>	<b>\$104,155</b>	<b>\$132,953</b>
LIABILITIES AND NET ASSETS			
LIABILITIES			
Accounts Payable and Accrued Expenses	\$3,008	\$3,734	\$21,047
Loans from Related Parties	10,000	–	–
NET ASSETS			
Unrestricted Funds	38,231	90,722	110,207
Temporarily Restricted Funds	–	9,699	1,699
<b>Total Liabilities and Net Assets</b>	<b>\$51,239</b>	<b>\$104,155</b>	<b>\$132,953</b>





#### Board of Directors

Eliza Factor,  
Founder and President  
Micaela Walker,  
Vice President  
Patricia Wolff,  
Board Treasurer  
Jen Sellar,  
Secretary  
Kamari Alexander  
Vanessa Connelly  
Jamie Luft  
Melissa Morgenlander  
Eric Nicklas  
Claire Nitze  
Nat Rubin  
Ghita Schwarz  
Elizabeth Wollman

#### Staff

Caitlin Mia Cassaro,  
Executive Director  
Diana Baron-Moore,  
Program Manager  
Leigh Reid,  
Communications Manager  
Jolene Festa,  
Staff Teacher  
Emily Antoniadis  
Grant Writer  
Melanie Flaxer  
Program Evaluation and  
Research Assistant  
Janet Olguin  
Bookkeeper  
Dana Behan, Cyn Morgan and  
Jillian Street  
Program Facilitators

Justin Ortiz and Jared Sumpter,  
Program Assistants  
Elias Eason,  
Security

#### Advisors

Amy Weber, LCSW  
Julie Cavanagh, P.S. 15 Vice Principal  
Michelle Ballon, MSW, PhD

#### Grants and Funders

American Chai Trust  
Bernheim Foundation, Inc.  
Budweiser (Stella Artois)  
Butler Family Foundation  
Frank & Ruth E. Caruso Foundation  
City Council Member Carlos Menchaca  
Stephen Colbert Americone Dream Fund  
Department of Youth and Community  
Development  
The FAR Fund  
The Flom Family Foundation  
Howard Gilman Foundation  
Huber-Resor Charitable Fund  
Magic Pebble Foundation  
Mary Duke Biddle Foundation  
Meringoff Family Foundation  
New York Women's Foundation  
The O'Connell Organization Family  
Foundation  
William J. and Dorothy K. O'Neill  
Foundation  
Pine River Capital  
Ronald McDonald House Charities  
TerraCRG  
Laura B. Vogler Foundation  
The Joseph Leroy and Ann C.  
Warner Fund

#### Professional Partners

501 Union  
Atelier Roquette  
The Black Cake Company  
Dry Dock Wine & Spirits  
Greene Grape Wine & Spirits  
Movers, Not Shakers!  
NY Printing & Graphics  
Saipua  
Van Brunt Stillhouse

#### Partners, Teaching Artists and Supporting Organizations

Amelia Robinson  
The Art Farm in the City  
ArtshackBrooklyn  
Audra Rox and Jennifer Milich  
Brooklyn Academy of Music  
Brooklyn Botanic Garden  
Brooklyn Brazilian Jiu Jitsu  
Cleaning with Meaning  
DJ Reborn  
DreamStreet Theatre Company  
Freddy's Bar  
GallopNYC  
Gary Shulman  
GiGi's Playhouse New York  
INCLUDEnyc  
Jalopy Theatre and School of Music  
Jessica Zippin, Dance/Movement  
Therapist  
Jordan Shapiro  
KEEN New York  
Kentler International Drawing Space  
Mark Morris Dance Group  
David Marquis  
MoMA  
MusicWorks  
My Circle of Girls  
Neha Jiwrajka

New York Transit Museum  
NYC Department of Education  
NYC Department of Parks and  
Recreation  
Red Hook Boaters  
South Brooklyn Children's Garden  
Speak, Learn, & Play  
The Stomping Ground  
Youth Inc.

#### A Very Special Thank You To

Brooklyn Friends School  
Victor Calise, Commissioner of the  
Mayor's Office for People with  
Disabilities  
Cecelia Clarke  
Carmen Fariña, Chancellor of the NYC  
Department of Education  
Jim Cassaro  
Nina Collins  
Jason Factor  
The Fuqua Family  
Cleary Gottlieb Steen & Hamilton LLP  
Jerron Herman and Heidi Latsky Dance  
(2016 Felix Award presenter)  
Zach Hochkeppel  
Linda Kocieniewski, My Circle of Girls  
Lawyers Alliance for New York  
Boby List  
Rebecca Alson Milkman  
(2016 Felix Award recipient in  
Performing Arts)  
Peggy Madison and the P.S. 15 Family  
Indiana Soto and the P. S. 71 Family  
Amelia Wilson

And finally, thank you to all of the  
volunteers who spend their free time  
playing with our extreme kids!





Extreme Kids & Crew is a 501(c)(3) organization incorporated in 2010. We celebrate children with disabilities, promoting socialization and confidence-building through arts and play-based programming. Our organization believes in creating an inclusive community for the whole family to feel seen, heard, accepted and respected. There are many ways to make this community of disability thrive:

- \* Volunteer to be a "Play Partner" to the many children visiting our spaces
- \* Donate and financially support the programs the organization offers
- \* Write for the blog, Broken and Woken, and help change the perception of disability: [brokenandwoken.blogspot.com](http://brokenandwoken.blogspot.com)
- \* Join a committee and lend your specific talents
- \* Join the board and be a leader to this growing organization

Photos: page 2 by Micaela Walker; page 5, 7, 8 and 13 by Extreme Kids staff; page 14 by MVS Studio; all other photos by Filip Wolak.

Original design by Rob Kimmel  
[robkimmeldesign.com](http://robkimmeldesign.com)

All photos taken at Extreme Kids & Crew locations and events.

Please contact us at  
[info@extremekidsandcrew.org](mailto:info@extremekidsandcrew.org)  
347 410 6050

Visit us online at [extremekidsandcrew.org](http://extremekidsandcrew.org).





## **Extreme Kids and Crew**

71 Sullivan Street  
Brooklyn, NY 11231

62-85 Forest Avenue  
Ridgewood, NY 11385

347 410 6050

[extremekidsandcrew.org](http://extremekidsandcrew.org)

 [facebook.com/extremekidsandcrew](https://facebook.com/extremekidsandcrew)

 [twitter.com/EDExtremeKids](https://twitter.com/EDExtremeKids)

 [instagram @extreme\\_kids\\_and\\_crew](https://instagram.com/extreme_kids_and_crew)